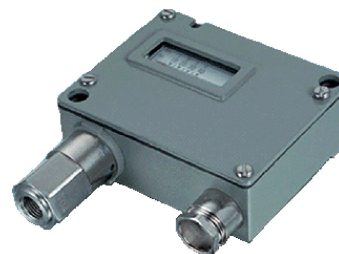


SHICO. PRESSURE SWITCH

MODEL : PK 250 Series

MAIN CHARACTERISTIC

- Sensor : Piston
- Measuring Range : 1~10 to 60~600 bar
- Output : Floating change-over contact
- Switching differential : not adjustable
- EN60730-1 / EN60730-2-9 : Typ 2.B.H



■ ACCURACY

- Repeatability Sensor : $\pm 1.0\%$ FS typ.
- Scale accuracy : $\pm 2.0\%$ FS typ.
- Switching differential : See table

■ MICRO SWITCH

- Rating : See table
- Resistance of Insulation : $>2M\Omega$
- Dielectric strength : 1.25kV terminal ground
- Life Time(Mechanical) :
 - Micro switch 10/11 : 20 Mio. Cycles
 - Micro switch 21 : 0.5 Mio. Cycles
 - Micro switch 23/26 : 0.3 Mio. Cycles

■ ENVIRONMENTAL CONDITIONS

- Operating temperature : $-20\cdots+70^\circ\text{C}$
- Media temperature
 - O-Ring NBR : $-30\sim+100^\circ\text{C}$
 - O-Ring FKM : $-15\sim+150^\circ\text{C}$
- Storage temperature : $-25\sim+85^\circ\text{C}$
- Protection : IP65
- Humidity : max.95% relative
- Vibration :
 - 5~25 Hz : $\pm 1.6\text{mm}$
 - 25~100 Hz : 4g
- Shock : 50g/ 11ms

■ ELECTRICAL CONNECTION

- Screwed cable gland : M20 \times 1.5
(Cable- $\phi 6\sim 13$ mm)
- Terminal screw : 3 \times 1.5 \cdots 4 mm²

■ MECHANICAL DATA

- Material :
 - Sensor : 1.4435,
 - Housing : Alsi10Mg/ Epoxy coated
 - Seal : NBR
 - Screwed cable gland : brass nickel plated
- Mounting torque : max. 25 Nm
- Installation : any position
- Weight : 710g

ORDERING INFORMATION

■ Code for stock products (short delivery time) : PK-

- Custom build code

TYPE	Range [bar]	Overpressure [bar]	Burst pressure [bar]
10	1~10	100	200
40	4~40	200	400
60	6~60	200	400
100	10~100	200	400
160	16~160	400	600
250	25~250	400	600
400	40~400	800	1000
600	60~600	800	1000

- A [With display : with adjusting screw]
- N [Without display : with adjusting screw]
- KN [With display : with adjusting knob]

■ Micro Switch

- 10 : Small switching differential
- 11 : Average switching differential
- 23 : Improved vibration resistance
- 26 : High vibration resistance
- 21 : With gold plated contacts

■ Sensor

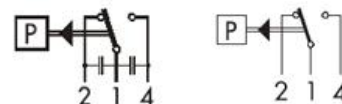
Material	Piston / Housing : 1.4435 O-ring : NBR	Piston / Housing : 1.4435 O-ring : FKM
Thread	G1/4"female G1/2"male	G1/4"female G1/2"male

AC380V15 (3)A

Switch contact : SPDT, DPDT

DC24V6 (2)A

DC220V0.2 (2)A



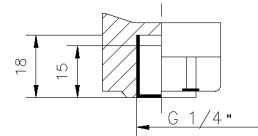
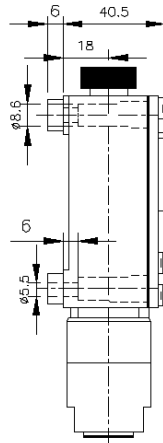
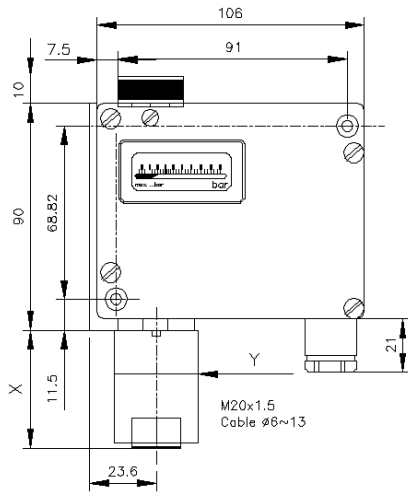
SAM HOI INDUSTRIAL CO., LTD.

#48-2, 66-BeonGil, Golden root-Ro, Juchon Myeon, Gimhae-city
Gyeongnam-do. Korea
Tel. +82-55-321-0578~9 Fax. +82-55-321-0573
E-mail: shico@shico.co.kr Homepage: <http://www.shico.co.kr>

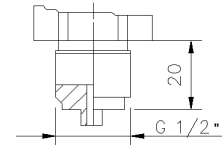
SHICO. PRESSURE SWITCH

MODEL : PK Series

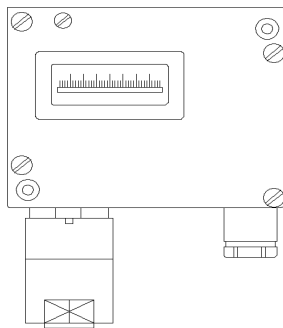
DIMENSION



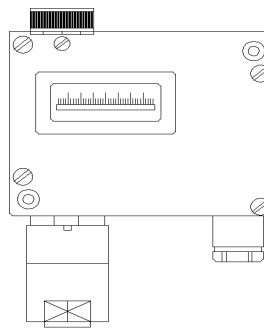
G 1/4 "
female



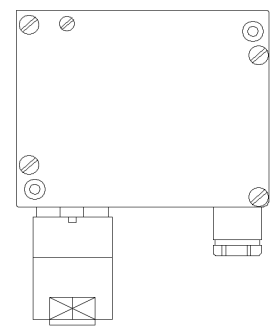
G 1/2 "
male



A

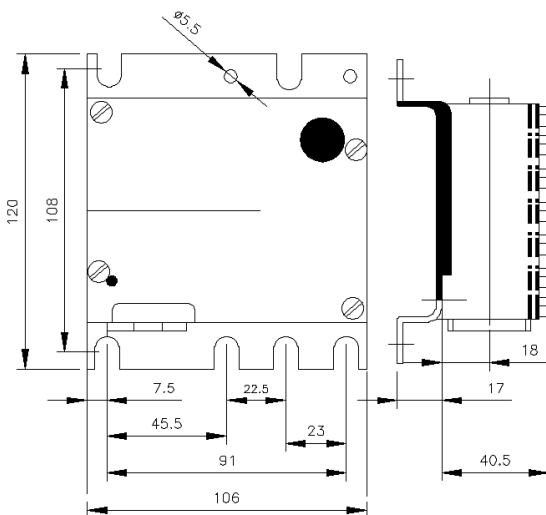


KN

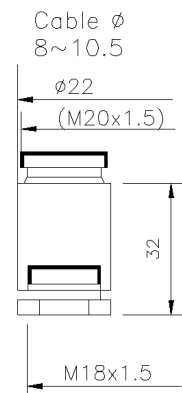
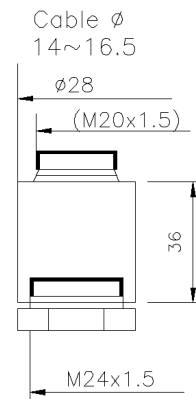


N

■ MOUNTING



■ ACCESSORIES



SAM HOI INDUSTRIAL CO., LTD.

#48-2, 66-BeonGil, Golden root-Ro, Juchon Myeon, Gimhae-city

Gyeongnam-do. Korea

Tel. +82-55-321-0578~9 Fax. +82-55-321-0573

E-mail: shico@shico.co.kr Homepage: <http://www.shico.co.kr>

D-40